

Get rid of Remote Out Queue problems with our **Print2Lan**. The first "Printers" Server that can "drive" up to 7 LAN's Printers.

### Feature Highlights

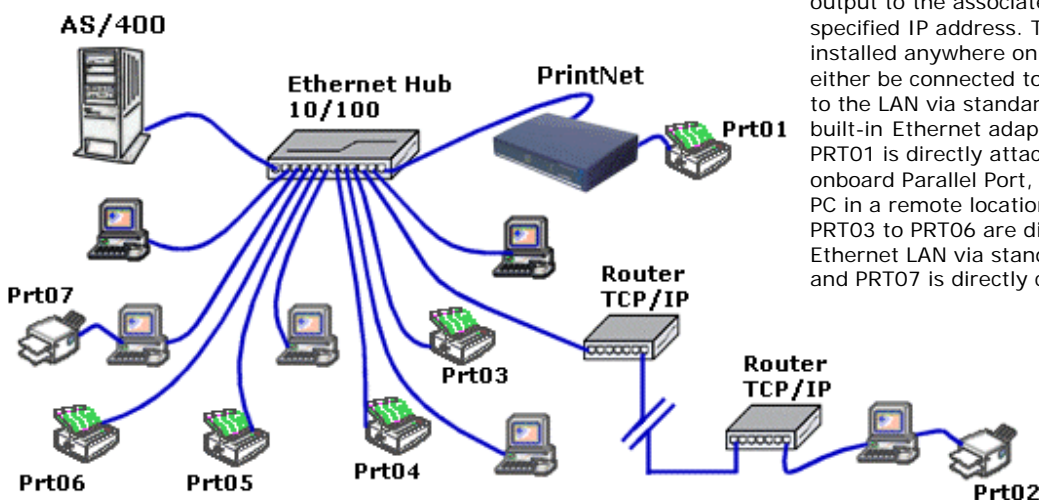


- Supports TelNet TN5250e protocol with direct TCP/IP attachment to IBM Host Systems.
- It allows the Printers to be configured as "Devices" on the AS/400, for optimal control of the spooled file and the Printer's Status (page range, out of paper, etc.)
- One parallel port is available for direct connection to a standard PC parallel Printer, for LAN or AS/400 printing jobs
- Includes an extensive list of pre-configured Printers driver (both laser and matrix) for easy set-up and configuration.
- Provides all LAN attached printers with the same reliable, full-function AS/400 printing support as a direct Twinax-attached 5250 printer.
- Built-in Web Server for easy installation, configuration and monitoring

Print2Lan is a unique "Printers Server" solution based on proprietary NET+Open technology developed by CompuMaster, for the next generation of embedded LAN based products.

Print2Lan can "drive" up to seven LAN Printers (1 printer can be directly attached to the onboard Parallel Port) allowing full printing control using enhanced TelNet TN5250e protocol over TCP/IP. TN5250e enables real-time reporting of Printer errors (such as paper out) and allows a LAN Printer to be configured as an AS/400 Device. Print2Lan can be directly attached to the existing LAN (using standard Ethernet connection and TCP/IP protocol. Print2Lan has been specifically designed to help users to maintain full control of LAN Printers and printing jobs in the same fashion as older Twinax attached printers. As a matter of fact, Print2Lan allows all configured LAN Printers to be set as Devices instead of Remote Out Queue. Furthermore, since Print2Lan does the AS/400 EBCDIC to ASCII data conversion, it frees the host or the client PC from performing this resource intensive task, allowing a faster first page out and overall increased speed.

The picture shows a typical Print2Lan installation. In this configuration, Print2Lan handles all AS/400 print jobs, performs the EBCDIC to ASCII conversion and sends the output to the associated LAN Printer with the specified IP address. The printers can be installed anywhere on the LAN and they can either be connected to a PC or directly attached to the LAN via standard TCP/IP Print Server or built-in Ethernet adapter. In this example, PRT01 is directly attached to the Print2Lan onboard Parallel Port, PRT02 is connected to a PC in a remote location (via Router TCP/IP), PRT03 to PRT06 are directly attached to the Ethernet LAN via standard TCP/IP Print Server and PRT07 is directly connected to a PC.



---

## **Print2Lan Technical Specifications**

---

### **Feature Highlights**

- "Printers Server" for any LAN based Printer.
- It can "drive" up to 7 PC Printers. The Printers can be attached to the PC parallel Port, or directly connected to the LAN via a standard TCP/IP Print Server or built-in Ethernet adapter.
- It attaches directly to the Ethernet LAN
- Full control of the Printer Status (such as paper out, offline etc.)
- Parallel Port available for direct connection of any standard PC Parallel Printer.
- Extensive list of pre-configured, customizable Printers Driver.
- It supports the following protocols: TN5250E, UDP, TCP, ICMP, HTTP (server), FTP (server and client), BOOTP and DHCP (client), TFTP (client), DNS, SMNP, POP3, SMTP.
- Built-in Web Server for easy installation, configuration and monitoring

### **Printer Session characteristics**

- Supported Printer Emulations: 3812-1
- Support for continuous forms, multi drawers, envelope, manual feeders, simplex/duplex, auto page orientation, and COR (Computer Output Reduction).
- Supports CPI, LPI override and LQ, NLQ.
- Supports Hex Pass-Through (HPT) feature, with customizable leading and ending sequences.
- Supports of EURO

### **Print2Lan-Port**

- TCP/IP Port for Windows'95/98, Windows NT and Windows 2000 for sharing the Bi-directional Printer Port available on the Print2Lan.

---

## **Print2Lan-Utilities**

---

- A collection of useful applications to make the installation, configuration and monitoring tasks easy.

### **Adapter cables**

Included with Print2Lan:

- Power cable
- DB-25-Centronics Parallel cable

---

## **Technical Specifications**

---

- Connectors:
  - 1 RJ 45, 1 Db-25 Parallel Port
- LED's:
  - Power, Link, 10/100, Check, Alert, Packet and Collision.
- Main Power 100-240V AC 50-60Hz
- Dimensions:
  - High: 47 mm
  - Width: 220 mm
  - Depth: 144 mm
- Weight:
  - 0,75 Kg.
- Temperature and relative humidity:
  - from 10° to 40°, 8% to 85%

---

## **Certifications**

---

CE –EN 55022 – EN 50082-1

---

## **Limited warranty**

---

1 year manufacturing fault warranty

---

## **Ordering information**

---

Print2Lan – Part Number 61AC00001